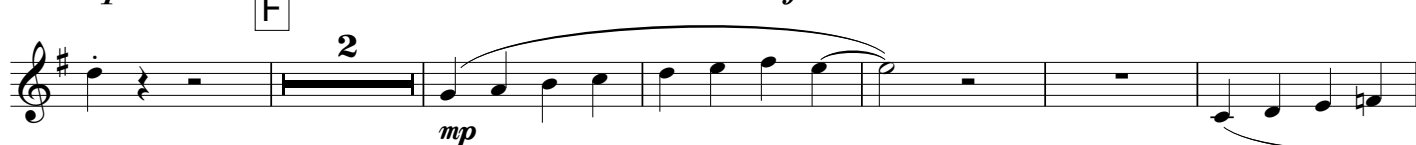
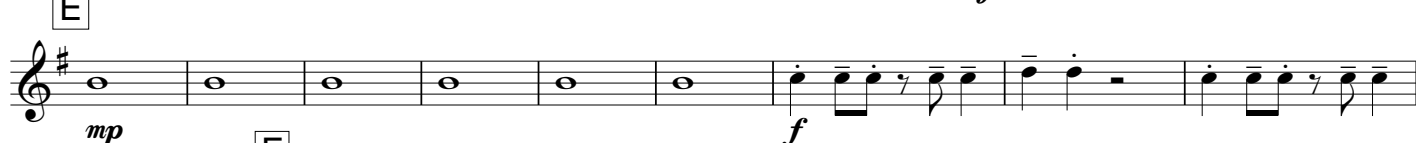
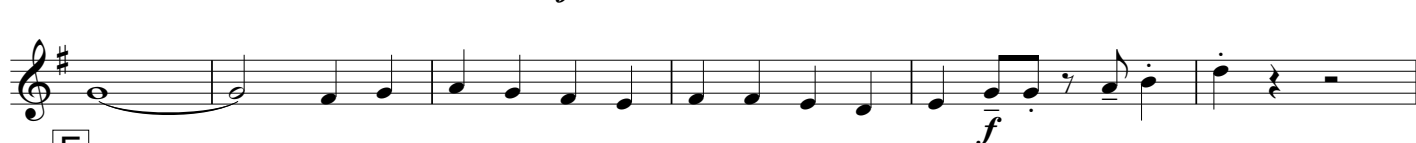
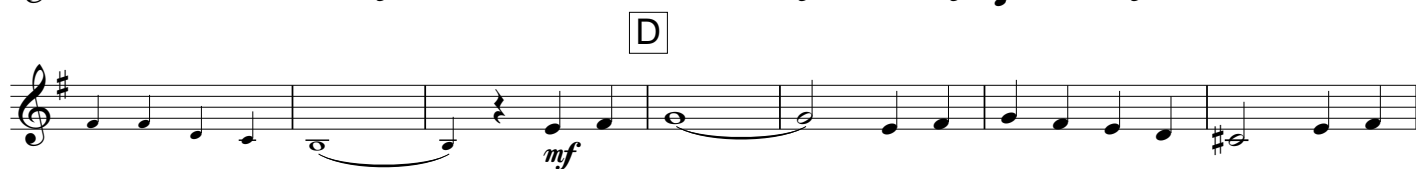
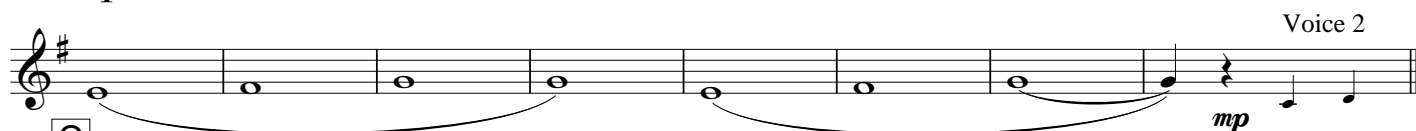
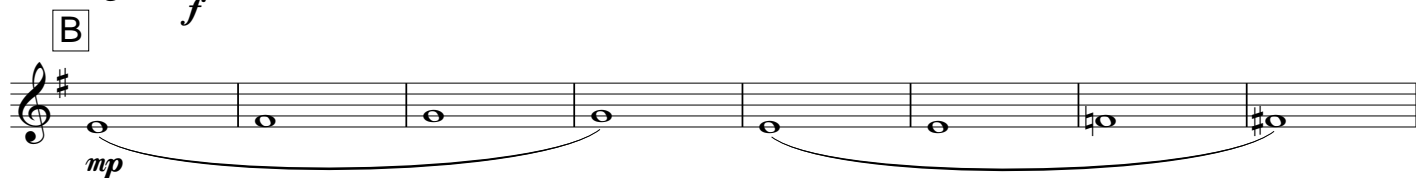
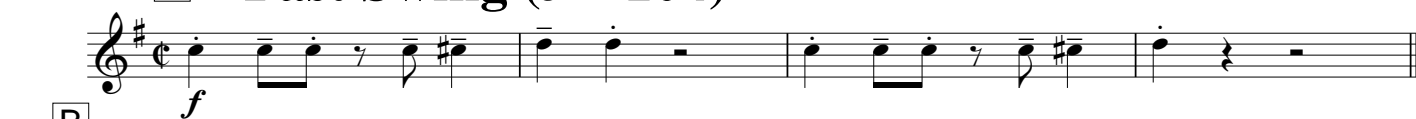


EDERS KEER

Comp. Gé Reinders
Arr. Peter Kleen
Dorpen Kleine Schaars

A Fast Swing (♩ = 104)



I Slow (♩ = 60)



♩ A Tempo (♩ = 104)

The image displays a musical score for the song "The Rose Tree". It consists of three staves of music, all in the key of D major (indicated by two sharps: F# and C#). The first staff begins with a treble clef and a mezzo-forte (*mp*) dynamic marking. It contains a series of whole notes, with a double bar line and repeat dots after the fourth measure. The second staff continues the melody with more whole notes. The third staff includes a measure with a double bar line and repeat dots, followed by a measure with a double bar line and repeat dots, and then a measure with a double bar line and repeat dots. The score is presented in a clean, black-and-white format.